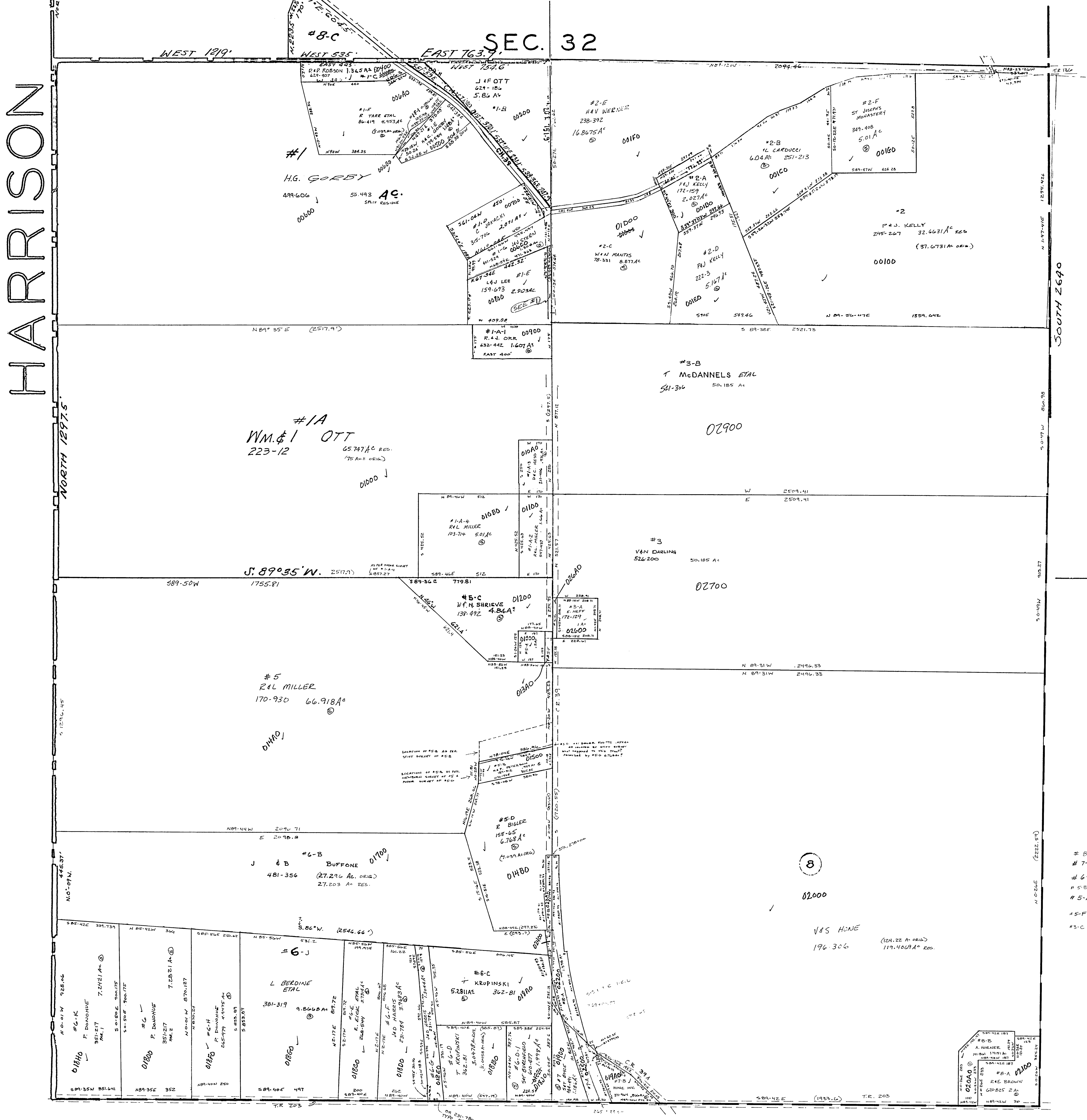


25  
-3100-



#1-F-1 H.C. GORBY 179-530 0-000-A-0

# 8-A	JEFFERSON COUNTY CORR	479-209	1,300 AC
# 7-A	"	400-238	907 AC
# 6-A	"	402-750	1,050 AC
# 5-B	"	402-591	271 AC
# 5-A	J. G. DORRIS	548-514	0,500 AC
# 5-F	R. B. MILLER	5-110	(10.11 AC RES.) - 16 AC RES. APPROX.
# 3-C	R. F. MCDANNELL	486-559	(10.11 AC RES.) - 1 AC RES. APPROX.

SALEM TOWNSHIP  
SECTION 31, TWP. 10, RANGE. 3.  
SCALE: 1" = 200'

31